



**GSSEA-Light<sup>®</sup>**

**Lecture 2: Installation of the  
Statistical Energy Analysis Software**



# Introduction

- ❑ You must install GSSEA-Light and databases using the downloadable installers from the [GSSEA-Light website](#).
- ❑ The demo software installer will take care of the installation of GSSEA-Light software itself, including all add-ons. Follow the installation instructions in the following steps: The default GSSEA-Light databases have a separate installer to avoid overwriting these when updating the software.
- ❑ Detailed installation information is also available as a separate help file that is included in the zipped installation package and also on the website.
- ❑ You need to have any version of the Microsoft SQL Server 2008 installed to run GSSEA-Light databases. If a full SQL server is not available or not to be used, the free Microsoft SQL 2008 Express Edition with Management Tools can be downloaded and installed on the local computer or a remote server.



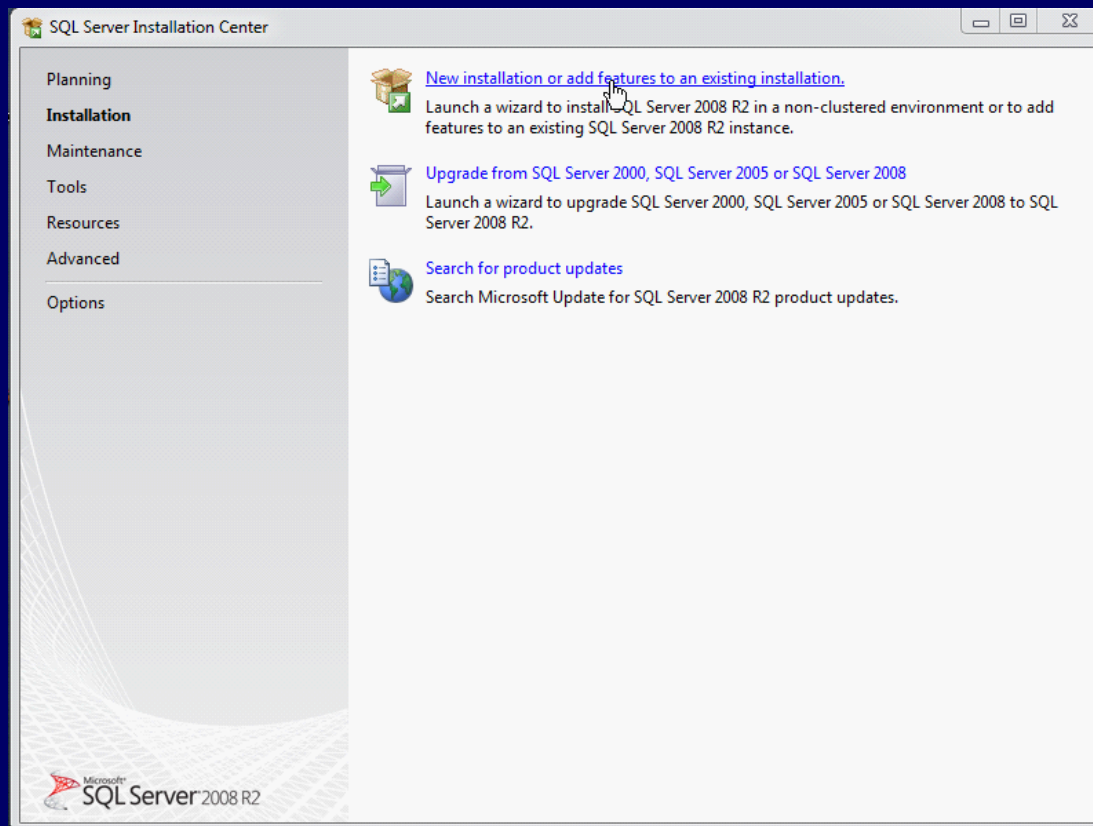
# Installation - Step 1: SQL Server

- Database Installation Strategies:
  - Single user: Local database on the same computer as the application. Microsoft SQL Server Express version is free and downloadable from Microsoft. May also be used with site license if users work with individual projects.
  - Site users: Installation of the SQL server on a network server. If the number of users is small then this can again be accomplished with the free Express Edition of SQL Server, but needs considerably more installation and administration effort. We can provide support for install and administration if necessary.
  - Large corporate central database on corporate server. The SQL Server exists already or appropriate version has to be licensed by the user before installation of the GSSEA-Light database. SQL server administrator support required.



# SQL Server installer start page

- The following start page opens when you run the SQL Server 2008 Express installer after downloading it from Microsoft.





# SQL Server Instance Configuration

- The settings in this page are very important!
- Be sure to select "Named instance".
- Also make sure that "SQLExpress" is filled in for both the Named instance and the InstanceID fields!

SQL Server 2008 R2 Setup

### Instance Configuration

Specify the name and instance ID for the instance of SQL Server. Instance ID becomes part of the installation path.

Setup Support Rules  
Feature Selection  
Installation Rules  
**Instance Configuration**  
Disk Space Requirements  
Server Configuration  
Database Engine Configuration  
Error Reporting  
Installation Configuration Rules  
Installation Progress  
Complete

Default instance  
 Named instance:

Instance ID:

Instance root directory:  ...

SQL Server directory:

Installed instances:

Instance Name	Instance ID	Features	Edition	Version
---------------	-------------	----------	---------	---------

< Back   Next >   Cancel   Help



# SQL Server Database Engine Configuration

- Also a very important page!
- Be sure to select "Windows authentication mode".
- If you make a local installation on a computer, also add a number of user categories for the computer to the SQL Server administrator list. That will avoid security issues for the GSSEA-Light users. See following slides.



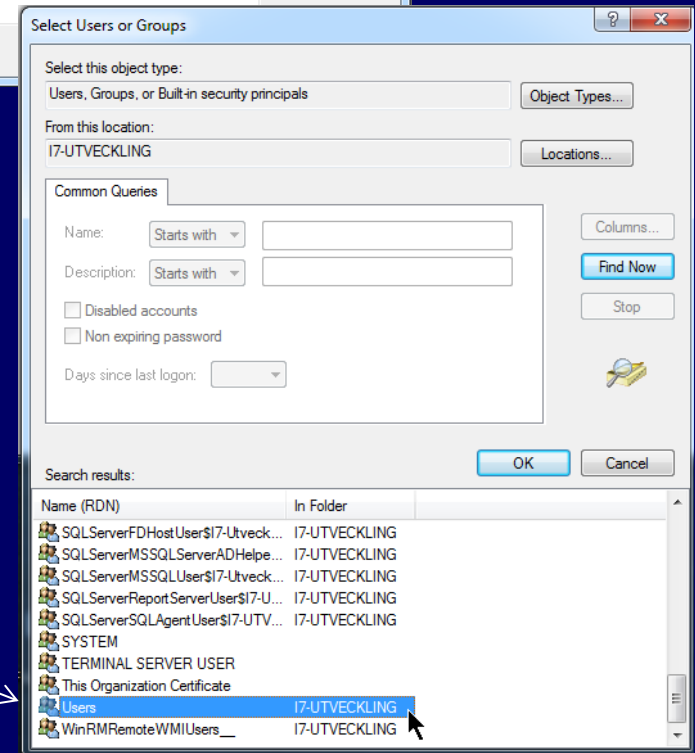
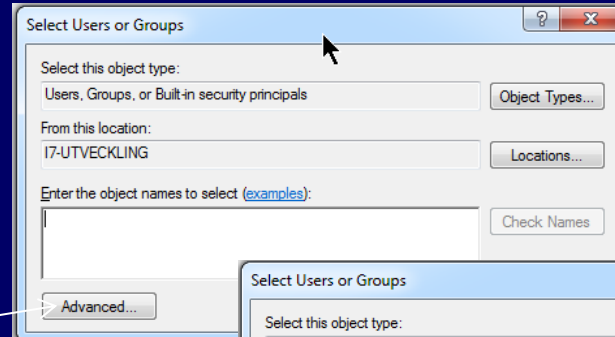
# SQL Server Database Engine Configuration

- Also a very important page!
- Be sure to select "Windows authentication mode".
- If you make a local installation on a computer, also add a number of user categories for the computer to the SQL Server administrator list. That will avoid security issues for the GSSEA-Light users. See following slides.



# SQL Server Database Engine Configuration

- Click the Add... button below the list of SQL server administrators to go to this dialog:
- Click the *Advanced...* button in this dialog and then the *Find Now...* button in the next dialog:
- Select the appropriate users or user group for this computer. Do not select Users but Authenticated users if GSSEA-Light shall also be used by remote users.
- Keep the default settings for the rest of the wizard and do the installation.

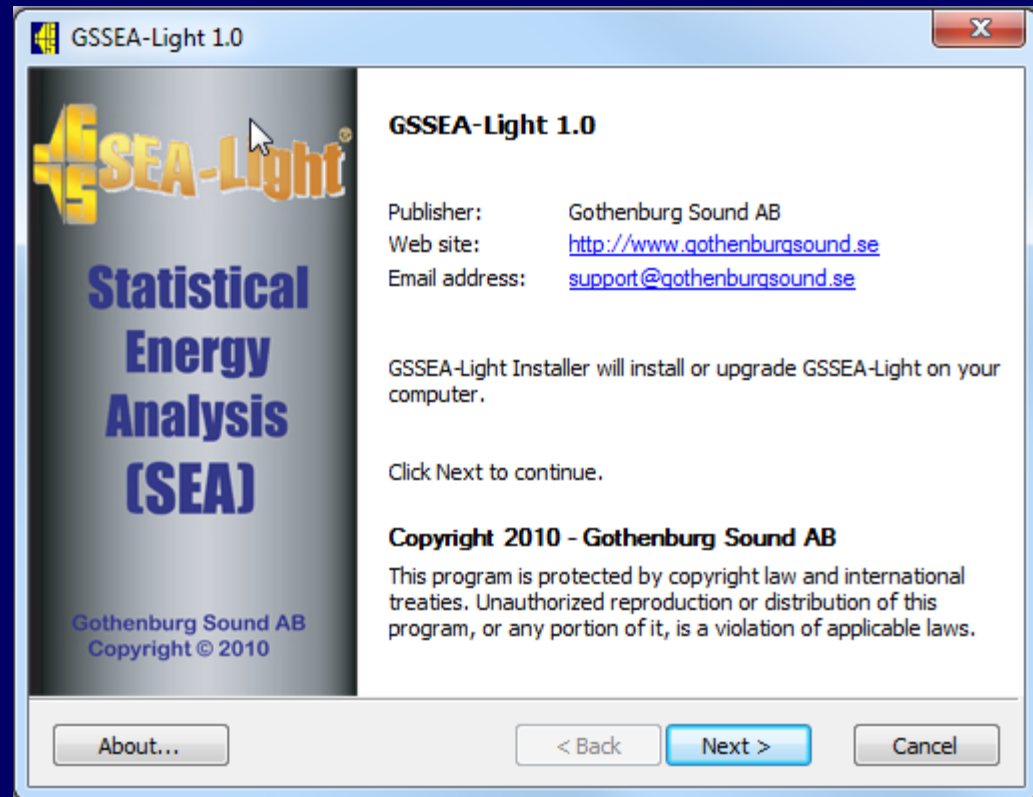






## Installation - Step 2: The GSSEA-Light software

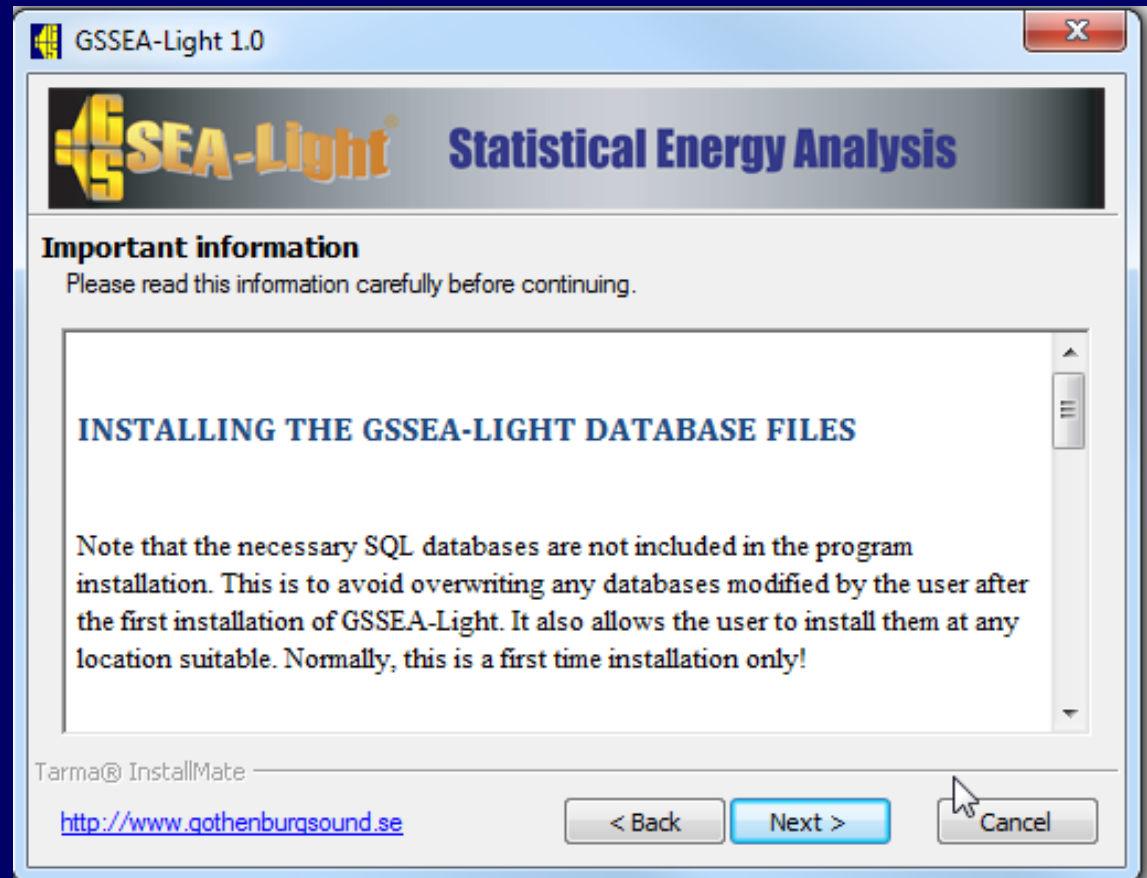
- The second installation step is to start the installer for the GSSEA-Light demo software, "GSSEA-Light-Setup.exe".
- It is in the Zip-file download. The following start screen should appear:





## Installation - Step 2: The GSSEA-Light software

- The next step of the installer reminds of the **separate** installation of the default GSSEA-Light databases





## Installation - Step 2: The GSSEA-Light software

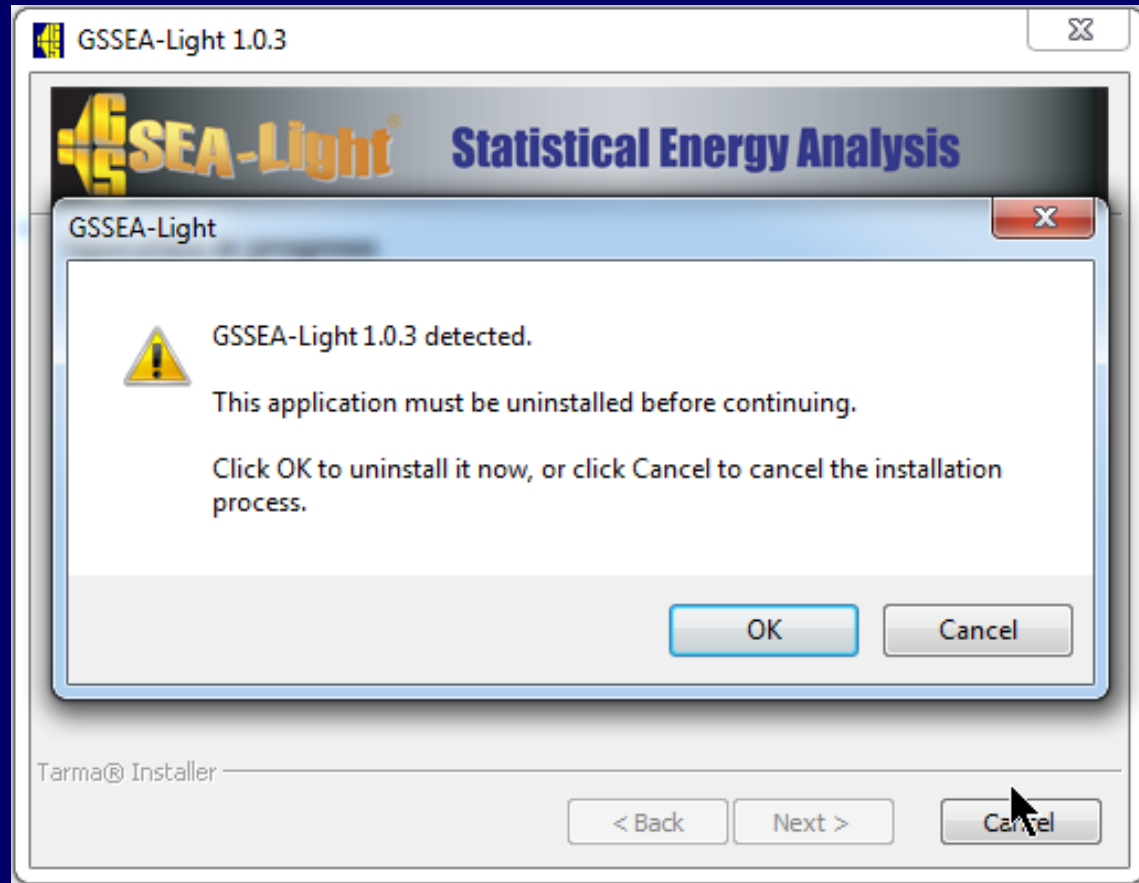
- Demo version: This information may be anything or blank when the demo version is installed.
- Purchased license: Be careful to copy the corresponding information exactly from the license E-mail. In addition, **copy the license file enclosed with the mail into the program folder of GSSEA-Light** after the installation.

The image shows a Windows-style dialog box titled "GSSEA-Light 1.0". At the top, there is a header bar with the GSSEA-Light logo and the text "Statistical Energy Analysis". Below this, the section is titled "Registration information". The text reads: "Please enter the registration information that you received from Gothenburg Sound AB." There are three input fields: "Name:" with the value "Juha Plunt", "Company:" with the value "Gothenburg Sound AB", and "Registration Code:" with the value "GSSEA-0GB65 - 14035 - 75A47 - 2431Q - 77280". Below the fields, there is a note: "If you did not receive the registration information, or for more information about the registration process, please visit the product web site." The "Product web site:" is listed as <http://www.gothenburgsound.se>. At the bottom left, it says "Tarma® InstallMate". At the bottom right, there are three buttons: "< Back", "Next >", and "Cancel".



## Installation - Step 2: The GSSEA-Light software

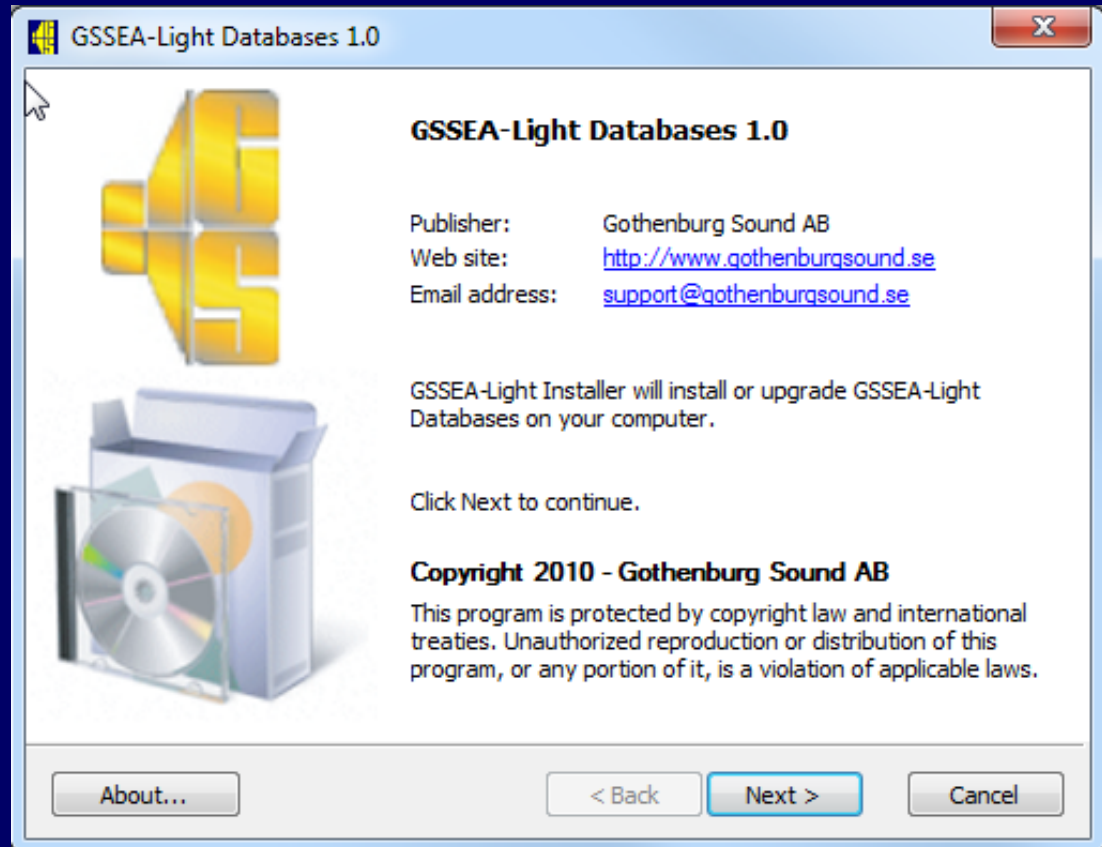
- If a previous installation exists, it will be uninstalled automatically if OK.
- The installation will complete.





# Installation - Step 3: Databases

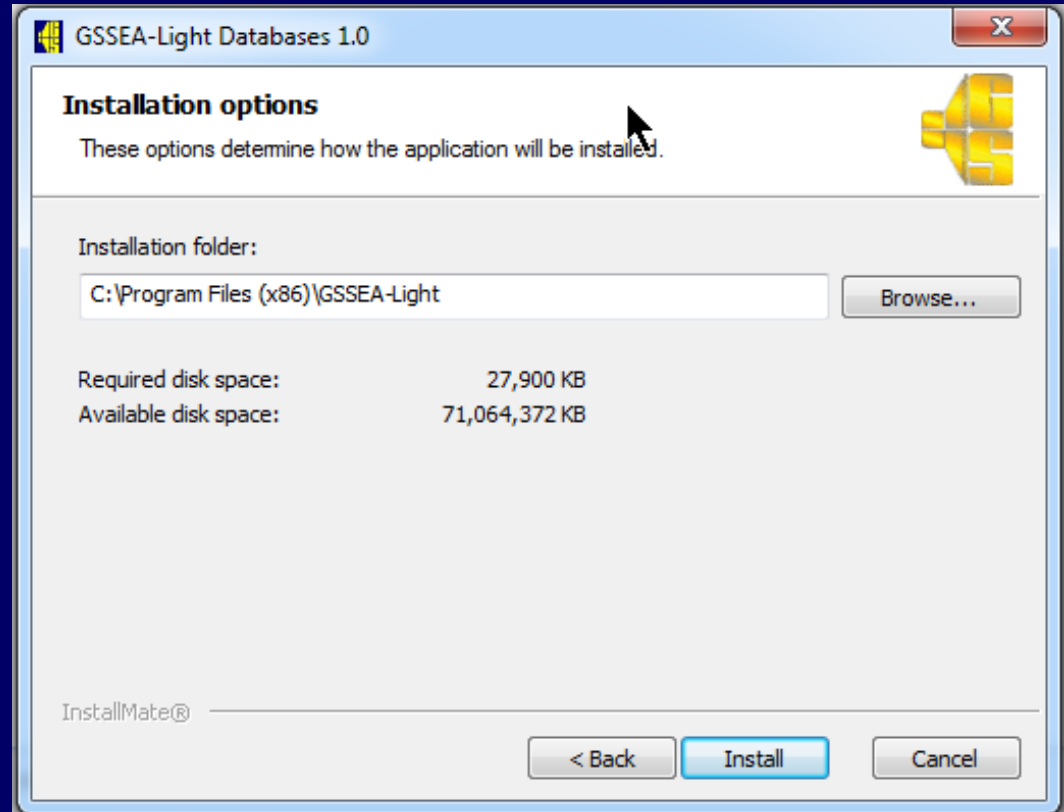
- The third installation step is to start the installer for the GSSEA-Light databases, "GSSEA-Light Databases-Setup.exe".
- It is in the Zip-file download. The following start screen should appear:





# Installation - Step 4: Databases

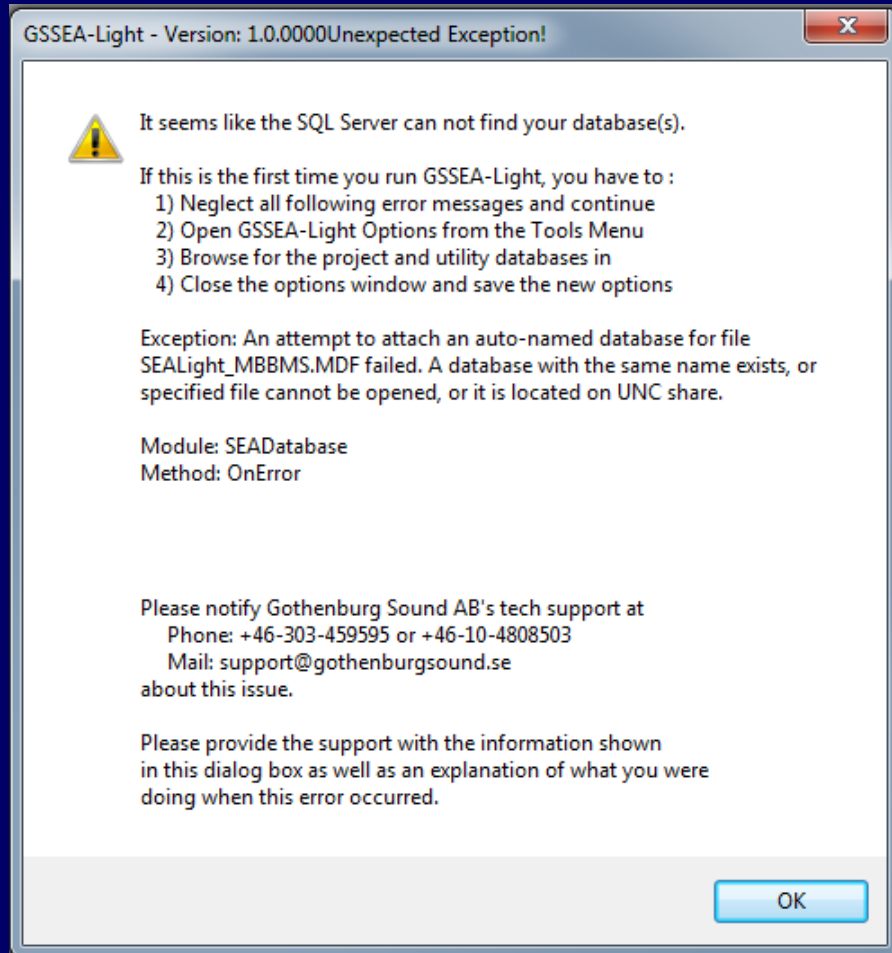
- **Demo version:** In order to work, the default installation folder must be used (a Databases folder in the GSSEA-Light program folder).
- **Purchased license:** It is wise to decide where to install the databases for GSSEA-Light. If you install them as default they will be replaced if a reinstall of the databases is done (by mistake).
- If you install them on a "own data" volume or a server, they may benefit from regular automatic or manual backup routines.
- After this selection, install will proceed and finalize.





# Installation - Step 5: Initial test of the GSSEA-Light

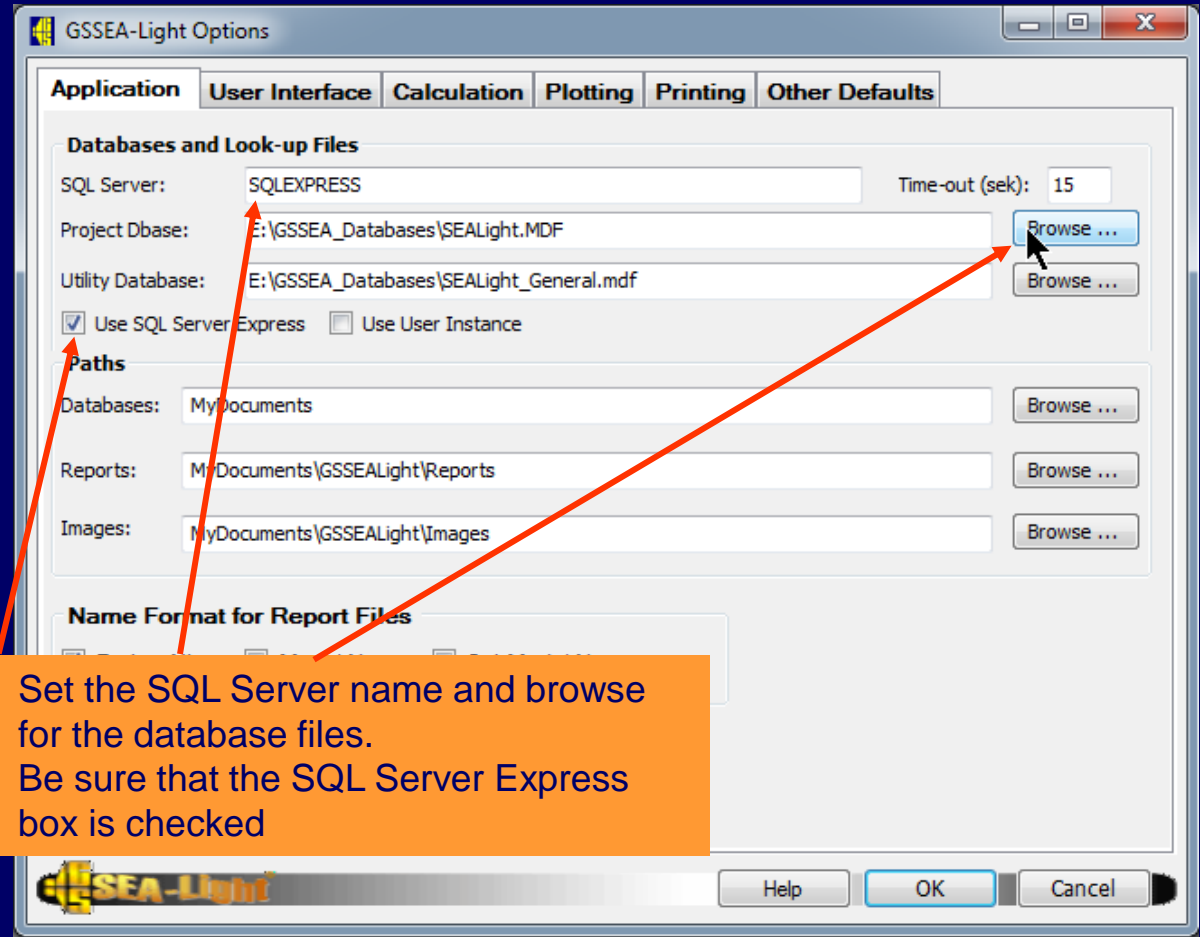
- When you first start GSSEA-Light after installation, and try to open a project or create a new project, you are most likely "welcomed" by some error messages, the first like this:
- The reason is that the location of your databases is not yet known to the program.





# GSSEA-Light: Starting the program first time (with SQL Server Express)

- You need to set Database options first time to be able to connect. Click on the Tools /Options Menu and the dialog as shown appears. Go to the Application tab.
- If you still have issues with SQL-database errors, those are most likely due to the configuration of security of the Database folder, See Installation- Step 4.







# GSSEA-Light: Final adjustment tips if problems with connection to database

- The name of the Server
  - It has happened that the SQLEXPRESS name has to be written as .\SQLEXPRESS to work. Happened for test on one computer but had to be changed back to no prefixes later to work (no explanation so far)
- Be sure that the database file path is correct
  - Browse for the database file again to be sure that nothing went wrong first time (very unlikely)
- The security settings for the database folder not OK
  - Check that all users or authenticated users have full control of the folder
- Check for working connection
  - Try to open a project (File Menu or toolbar) or a utility database from the Databases Menu. If problems persist, contact the GSSEA-Light Support.
- Observe the slightly different database options with a central SQL server
  - Server name given by your database administrator
  - Database name, no path just "SEALight"
- Consult the read-me files and online help about how to adjust the database settings
  - If still not OK contact us for support!