



SQL Server 2008 Express installation for GSSEA-Light

User guide



Table of Contents

SQL Server 2008 Express installation for GSSEA-Light.....	3
SQL Server installer start page.....	4
SQL Server Instance Configuration.....	6
SQL Server Database Engine Configuration.....	7



Installation

Installation: SQL Server

The SEA general and project data is kept in two SQL databases under Microsoft SQL server 2008 or later. You need to have any version of the Microsoft SQL Server 2008 installed to run GSSEA-Light. If an full SQL server is not available or not to be used, the free Microsoft SQL 2008 Express Edition with Management Tools can be [downloaded](#) and installed on the local computer or a remote server.

The **first step** is to decide the **SQL server strategy** to apply. In summary, one of the following main routes can be followed:

- **Single computer strategy.** Install SQL Server and GSSEA-Light databases locally on the same computer as the application. This is the simplest and least costly alternative if it is not needed for different users to work with the projects on different computers. The SQL Server installation can be scaled up later to a network access strategy. This strategy is probably best when starting to use GSSEA-Light since it is most uncomplicated. Install the Microsoft SQL Server 2008 Express Edition on the computer as described below.
- **Multiple computer strategy (small number of simultaneous users).** Installation of databases on a network server. If the number of users is small then this can again be accomplished with the Express Edition of SQL Server 2005, but needs considerably more installation and administration effort. The SQL server administrator needs to install and configure the users for these databases, and provide the necessary connection information to be used in the [GSSEA-Light settings](#). We can provide support to install and administration if necessary.
- **Corporate SQL server strategy.** The company may already use Microsoft SQL Server 2008 as a database engine on a network server and is licensed by the company. The GSSEA-Light databases may then be installed on this server and accessed by the GSSEA-Light client software. The SQL server administrator needs to install and configure the users for these databases, and provide the necessary connection information to be used in the [GSSEA-Light settings](#).

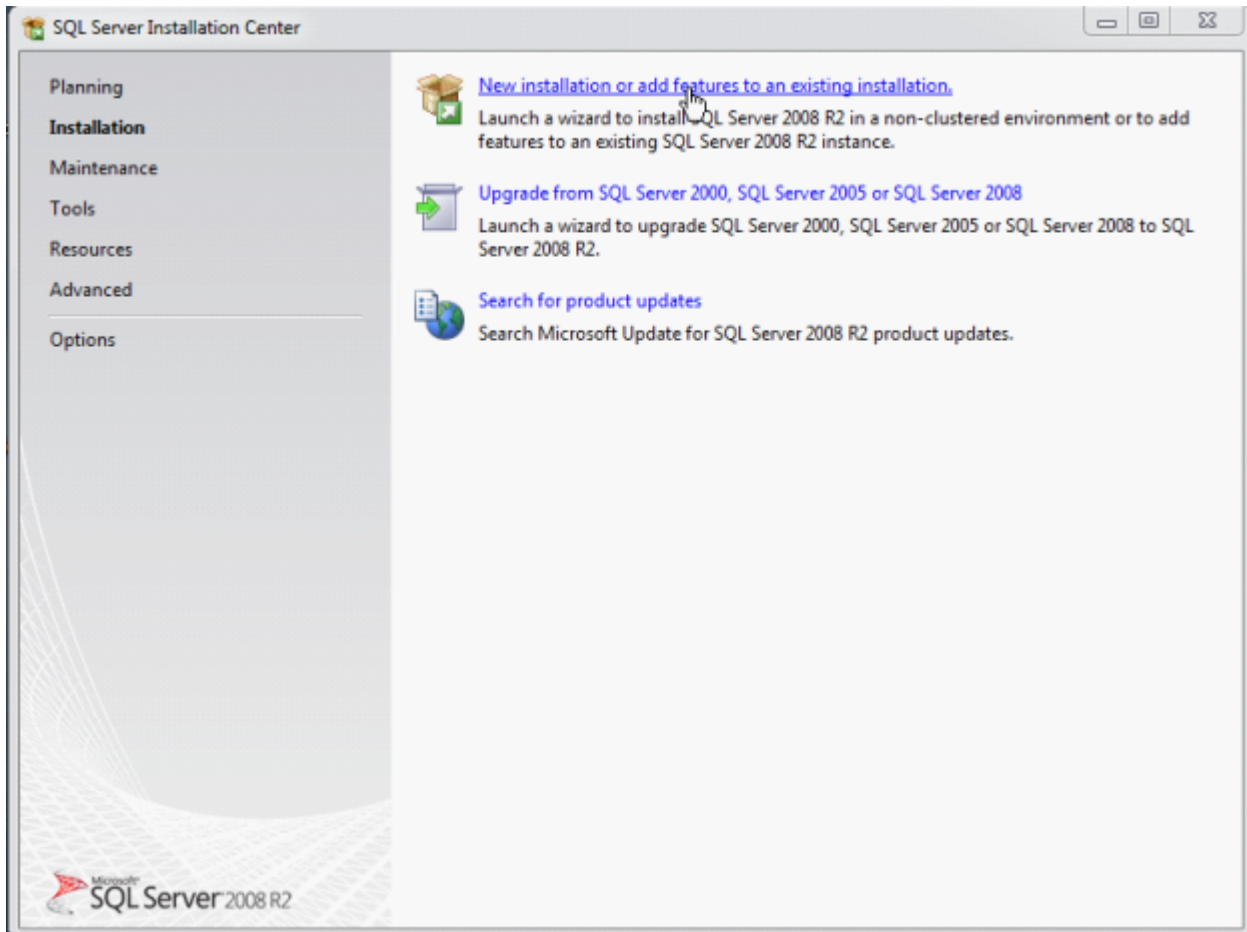
The detailed configuration details during the SQL Server 2008 Express installation to run GSSEA-Light are in the following pages.



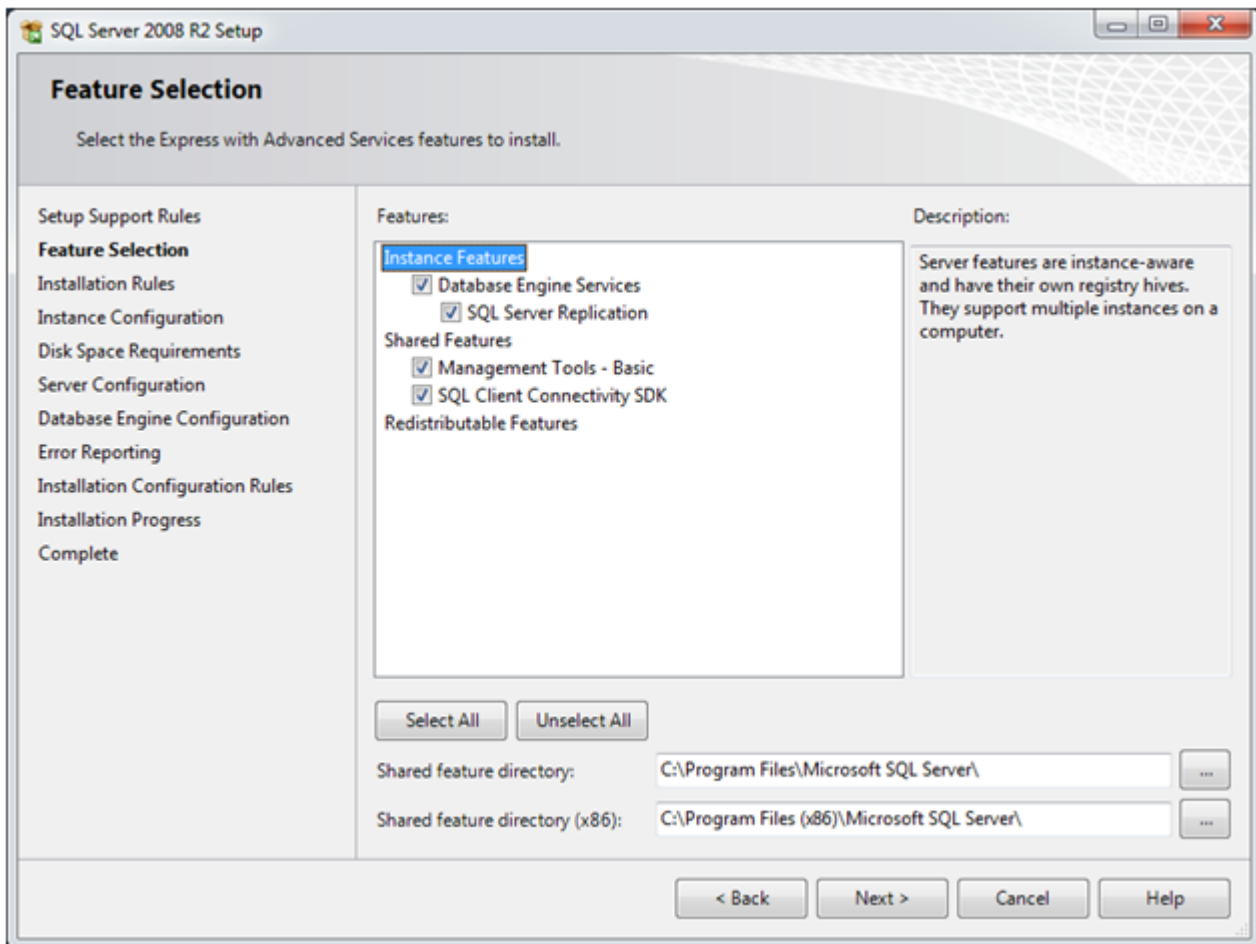
GSSEA-Light[®] Installation

SQL Server installer start page

The following start page opens when you run the SQL Server 2008 Express installer after downloading it from Microsoft.



Select new install. The next wizard page of interest is the feature selection:



Select all features. Next of interest is the Instance Configuration.



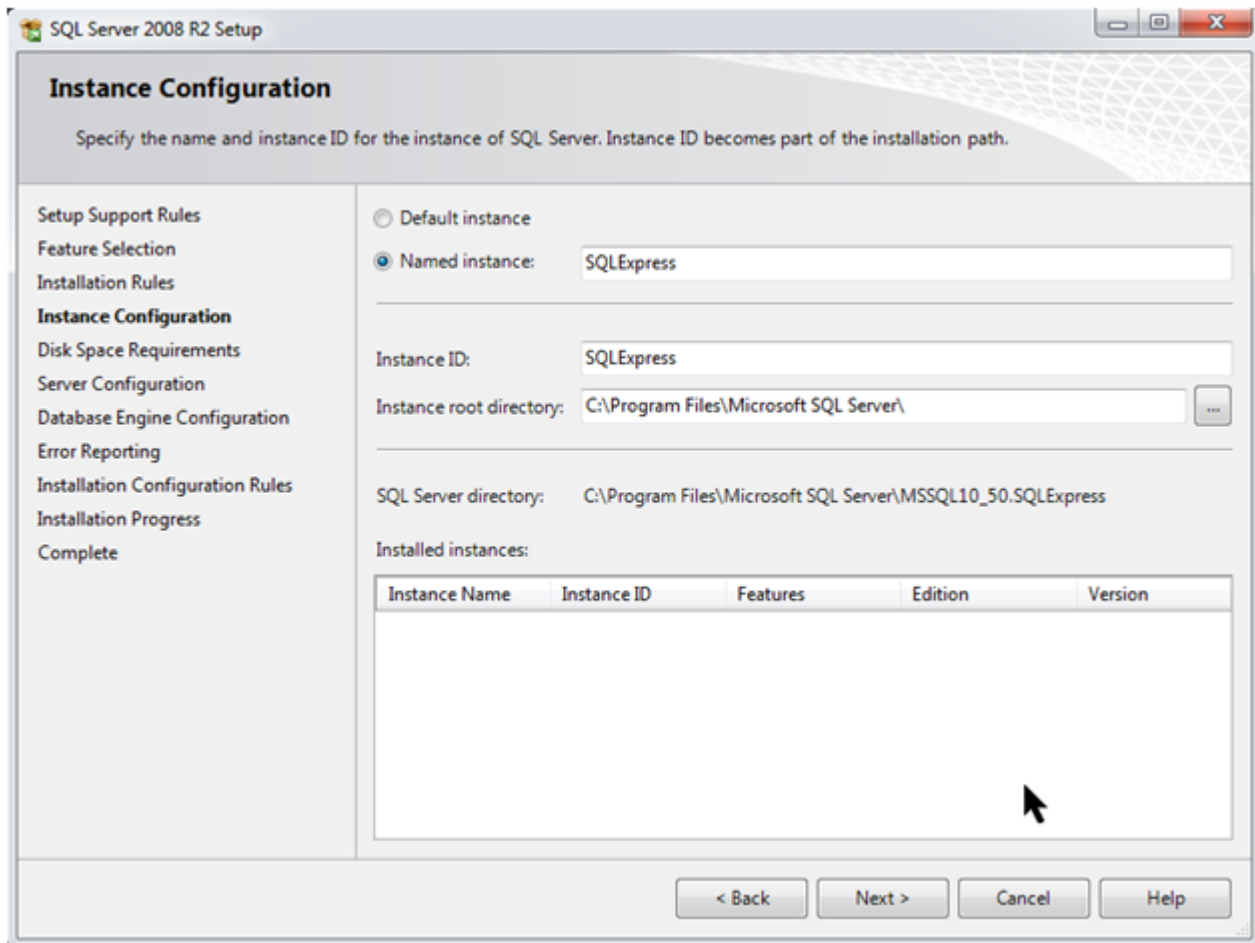
Installation

SQL Server Instance Configuration

The settings in this page are very important!

Be sure to select "Named instance".

Also make sure that "SQLExpress" is filled in for both the Named instance and the InstanceID fields!



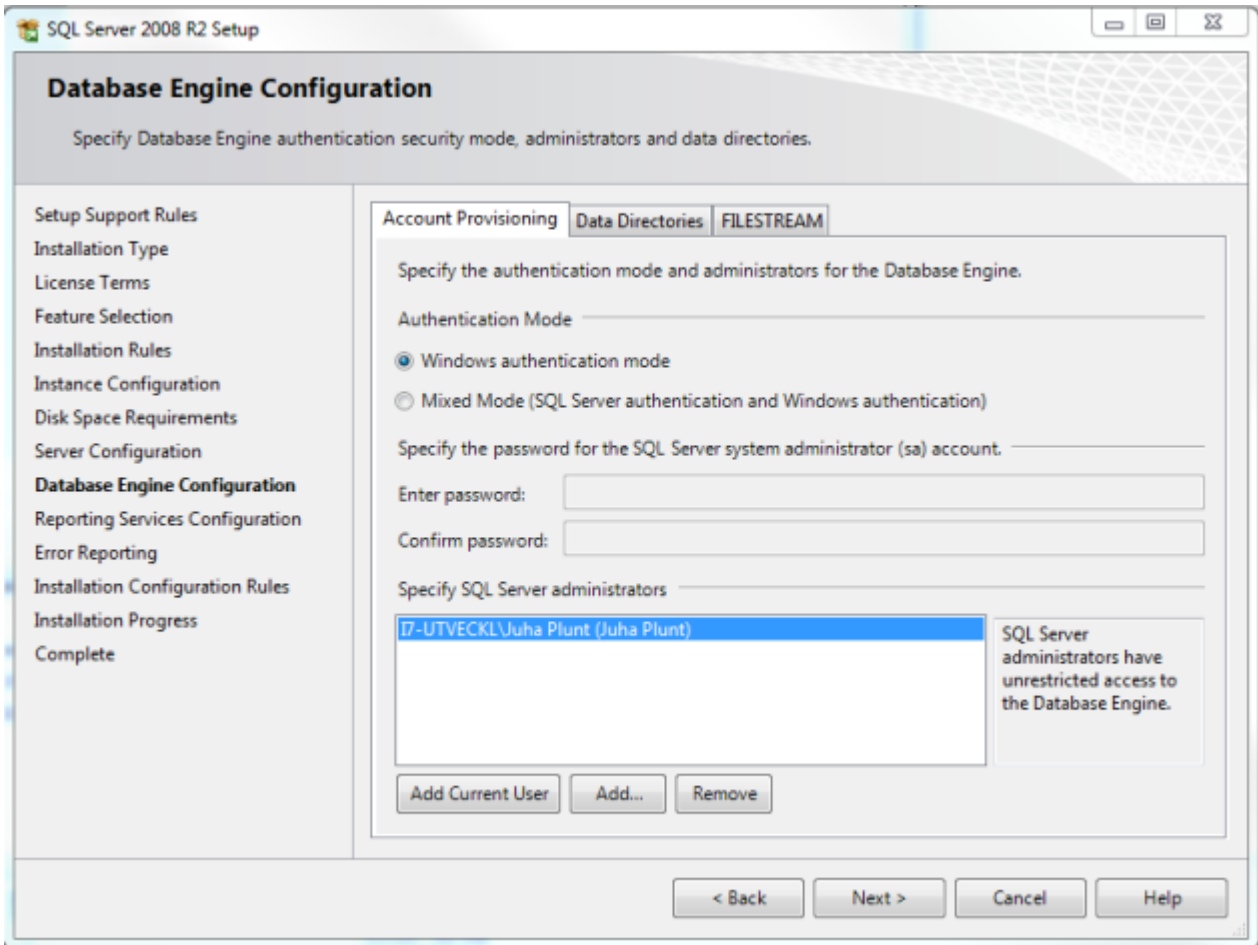


GSSEA-Light[®] Installation

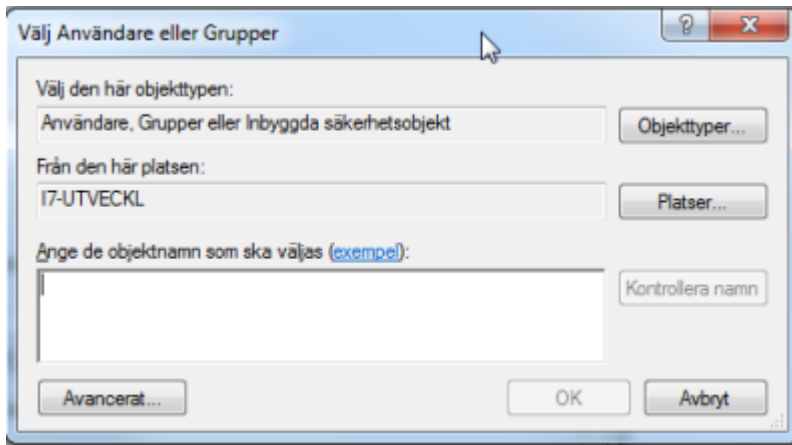
SQL Server Database Engine Configuration

Also a very important page!

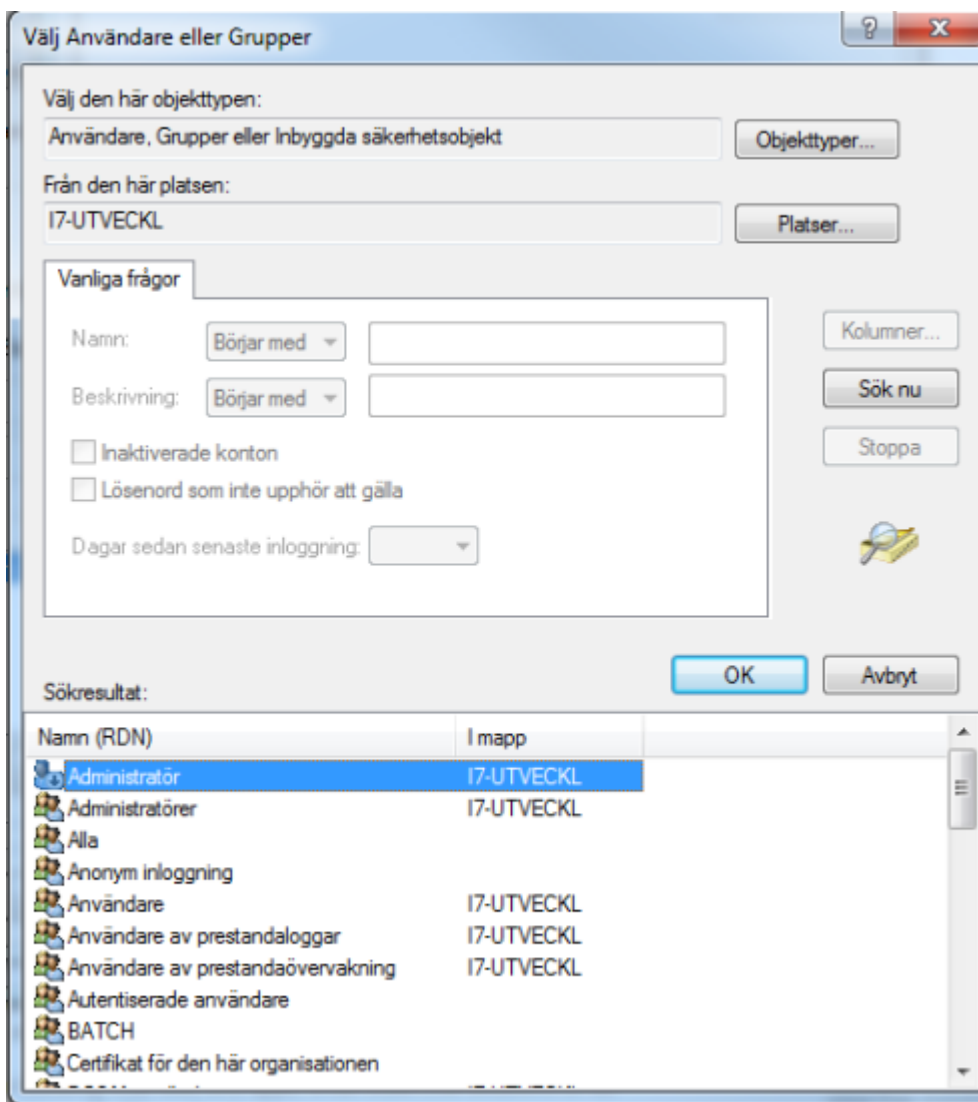
Be sure to select "Windows authentication mode".



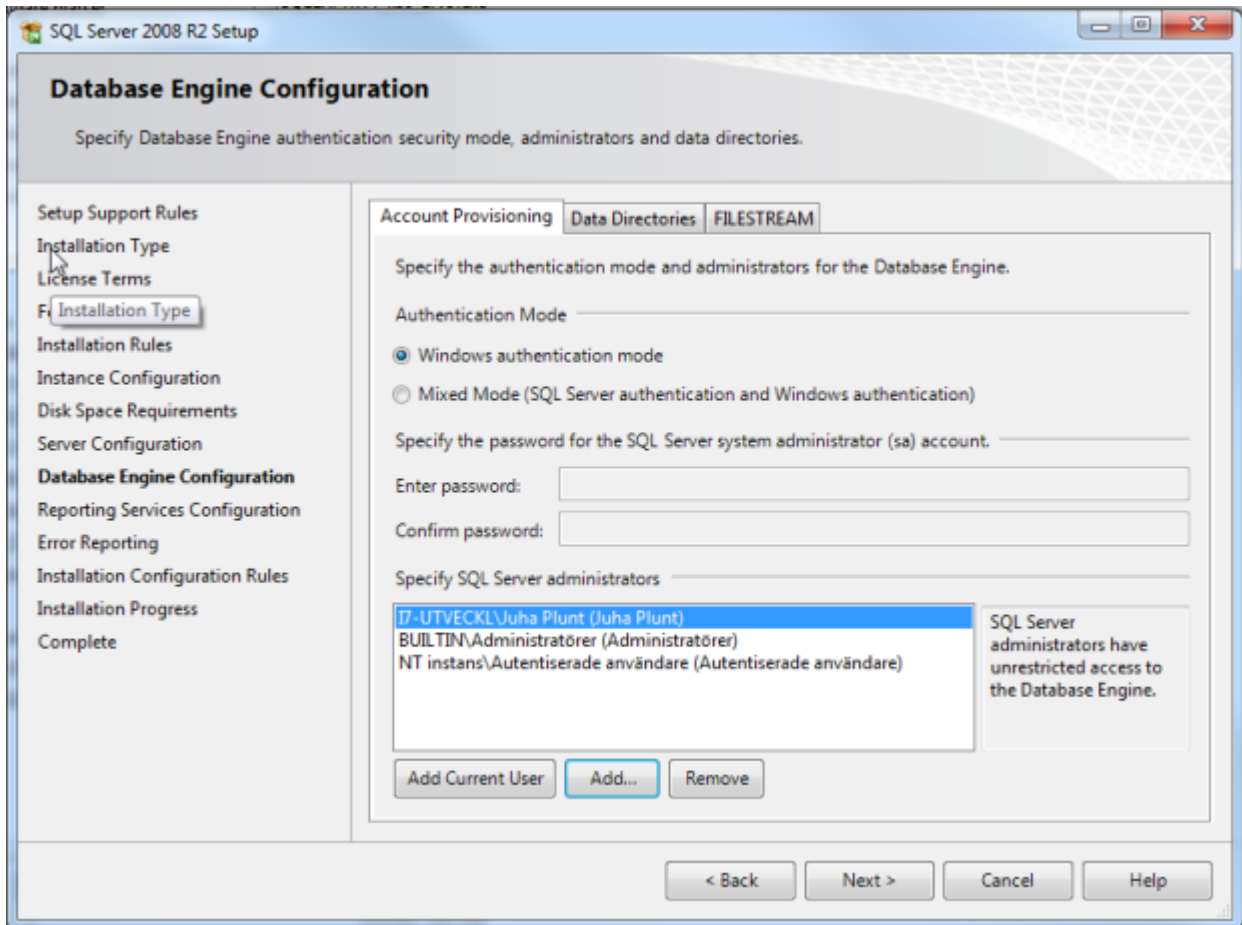
If you make a local installation on a computer, also add a number of user categories for the computer to the SQL Server administrator list. That will avoid security issues for the GSSEA-Light users. Click the **Add...** button below the list of administrators:



Click the **Advanced...** button in this dialog and then the **Search** button:



Select the appropriate users or user group for this computer. Do not select all users but authenticated users if GSSEA-Light shall be used by The final configuration may look like this:



You may also turn on the FILESTREAM feature, although it is not used yet by GSSEA-Light. It may be a feature used in the future.

Keep the default settings for the rest of the wizard and do the installation.